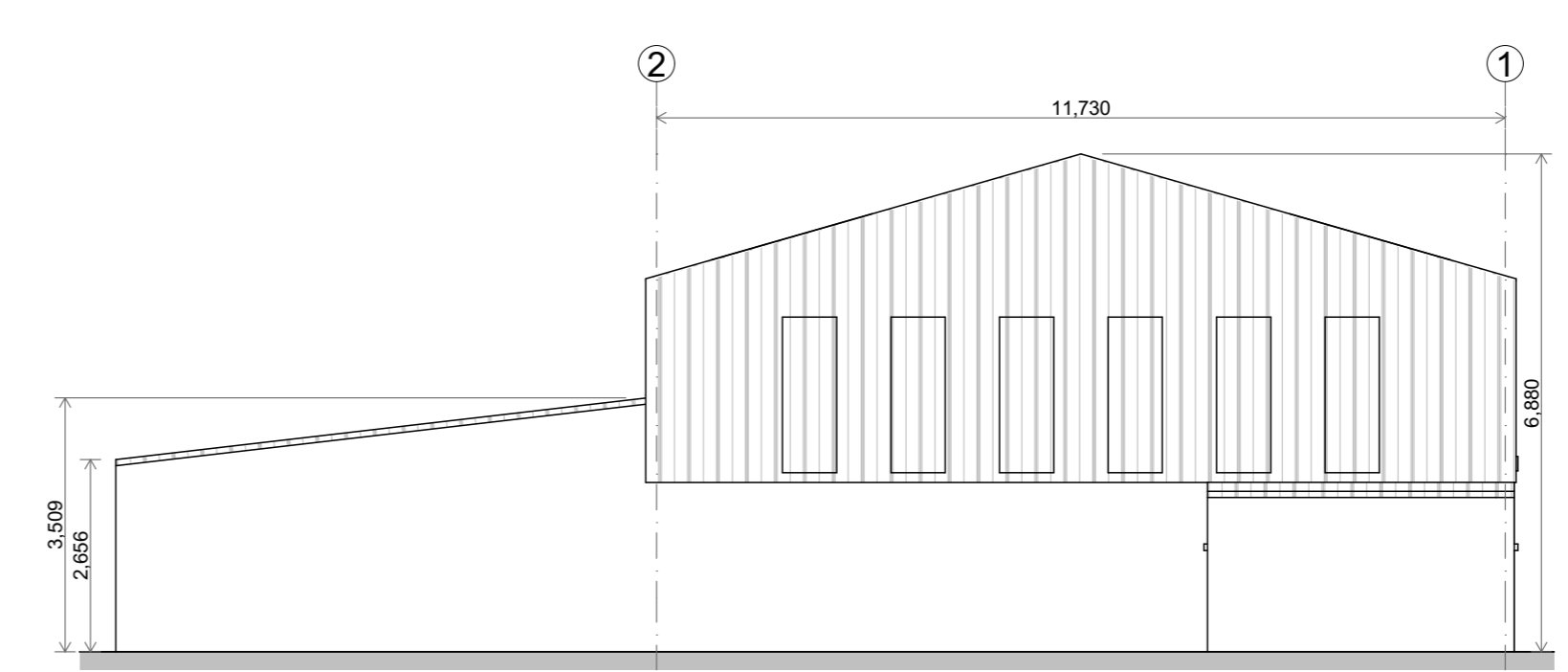
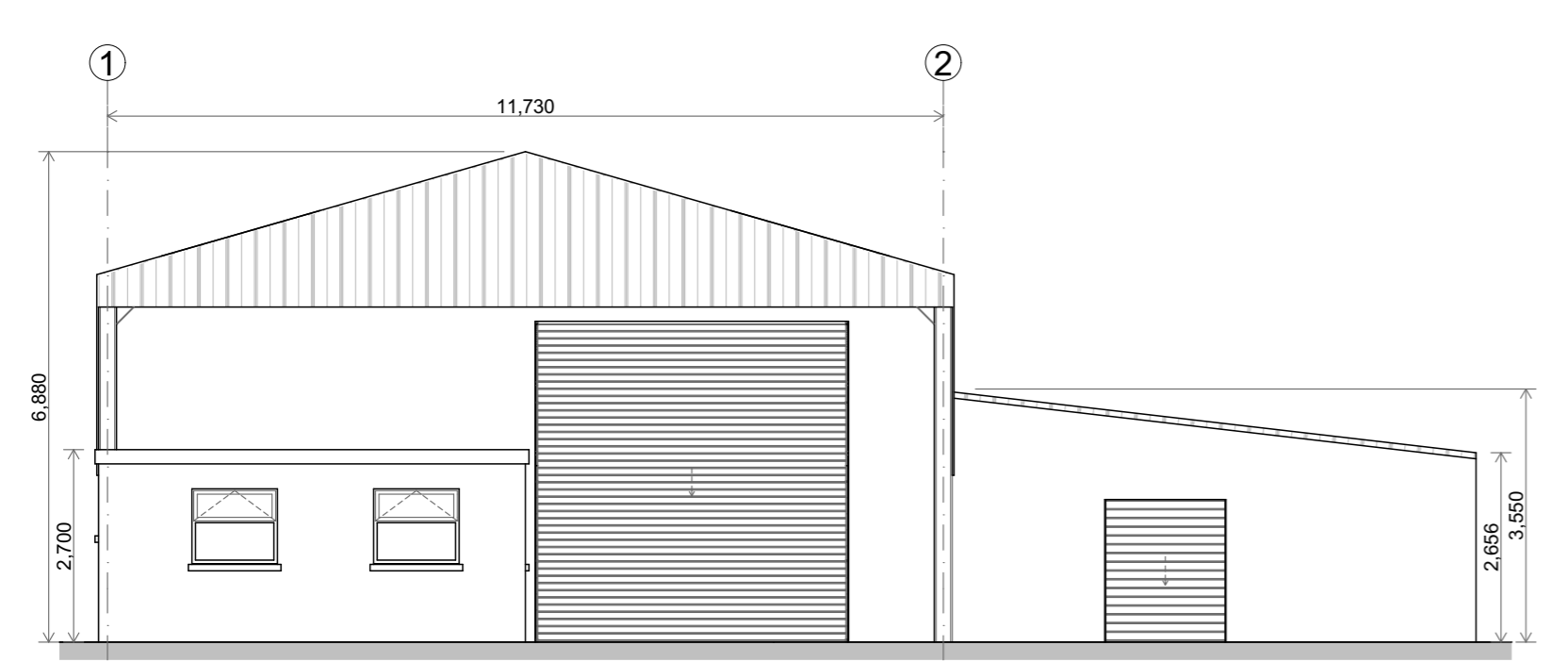
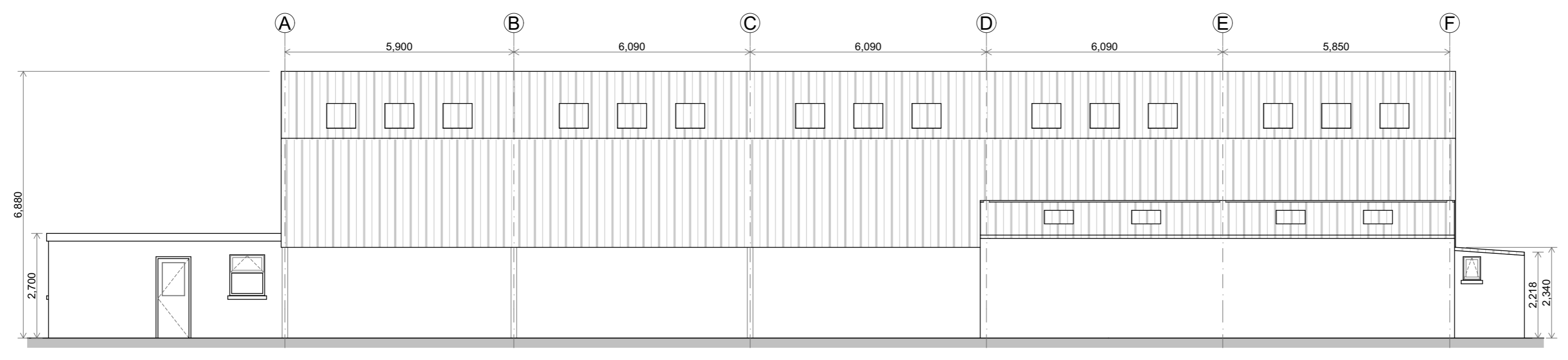


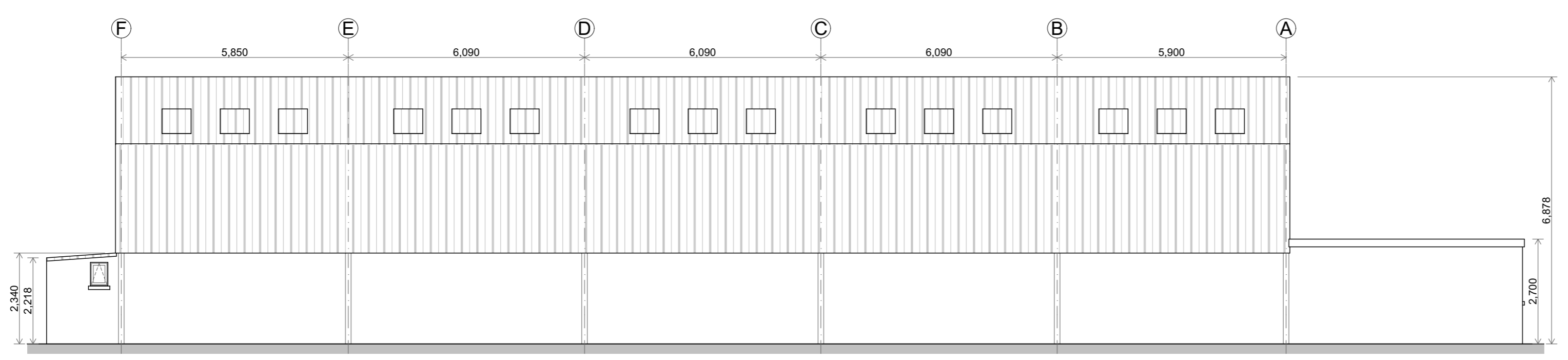
1 Ground Floor 1:100



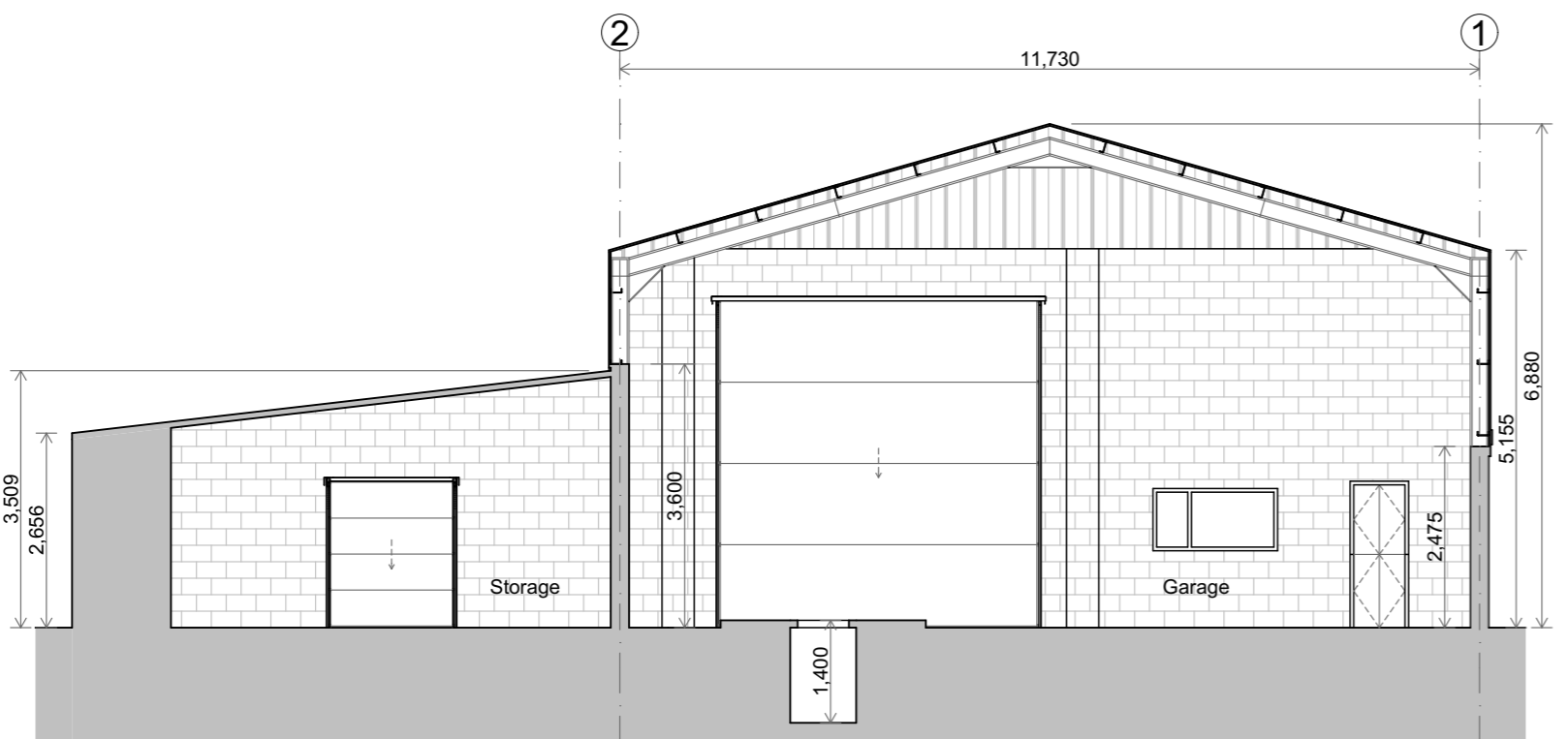
2 Front Elevation 1:100 3 Rear Elevation 1:100



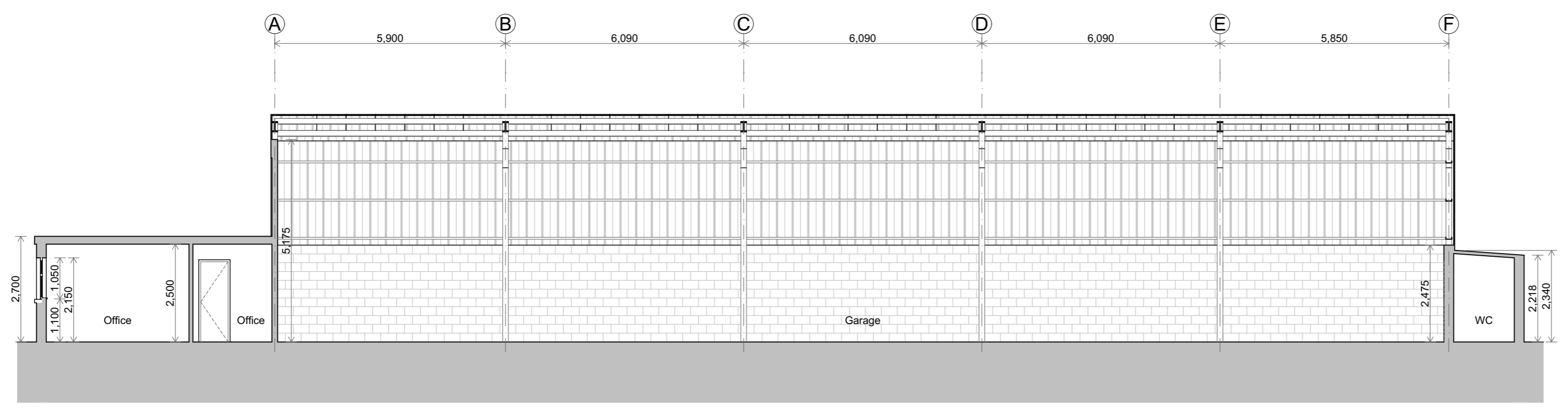
4 Side Elevation 1:100



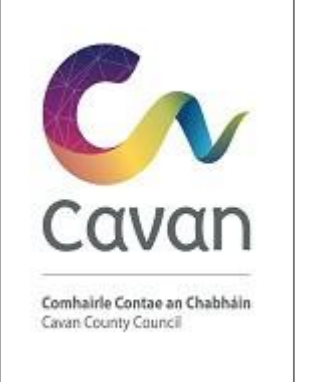
5 Side Elevation 1:100



6 Section A-A 1:100



7 Section B-B 1:100



REV	DATE	DESCRIPTION	APPROVED

Wynne Gormley Gilson Architects & Surveyors Ltd.
 © WGG ARCHITECTS & SURVEYORS LTD
 COPYRIGHT RESERVED
 JOB DETAILS
 Housing Development at Kinnypottle,
 Cavan Town, Co. Cavan for Cavan
 County Council

Scale of: A1 1:100, 1:1	Dwg. no PL 20-040-100	Amend.
Date 07/01/2021	Description Planning - Existing Floor Plan, Elevations & Sections	
Drawn by John McDermott		
Checked by Enda Gilsonan		

21, Church View, Cavan
 T +353 49 43 61096
 F +353 49 43 62907
 E info@wggarchitects.ie
 W www.wggarchitects.ie